

Refrigerant Leak Alarm Monitoring

The IMEC-M provides an easy to use alarm and status display for up to 256 RD-em refrigerant leak detectors and is typically used in hotel and large office installations.

In the event of a refrigerant leak an audible alarm and red LED will prompt staff to view the backlit LCD screen, which will provide details of the room in fault/alarm, so further action can be taken. An Ethernet port also enables the status and configuration to be viewed remotely via a web browser.

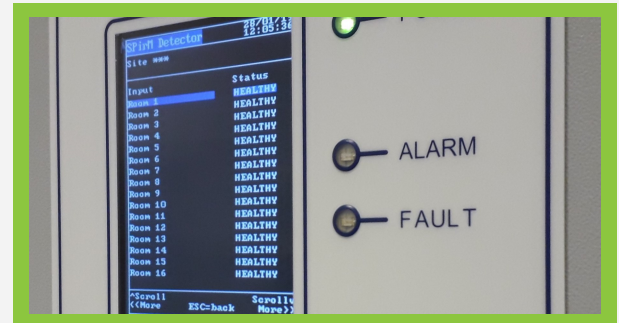
The IMEC-M operates in conjunction with up to 8 x 32 channel IMEC-Smart's which provide power and monitor the volt free alarm contacts within the RD-em refrigerant leak detector. A network cable communicates alarm and status details of each refrigerant leak detector from the IMEC-Smart monitoring panel to the IMEC-M.

The local display and keypad on the IMEC-M or a web browser can be used to configure the system with each input being assigned a custom name to clarify alarm locations.



Features at a glance

- » Local user interface, displays alarm status and provides an overview of all connected RD-em refrigerant gas leak detectors
- » Communicates with up to 8 off 32 channel (4 off 64 channel) Imec-Smart units across Modbus RTU network.
- » On board Ethernet interface can be used to configure and view status details from a web browser ?
- » Individually configurable inputs, normally open, normally closed with alarm time delays and option to latch alarms
- » Real time alarm and event history log
- » IMEC Smart provides low voltage power to refrigerant leak detectors and offers local alarm indication.
- » Android application to assist with installation and commissioning of IMEC-Smart

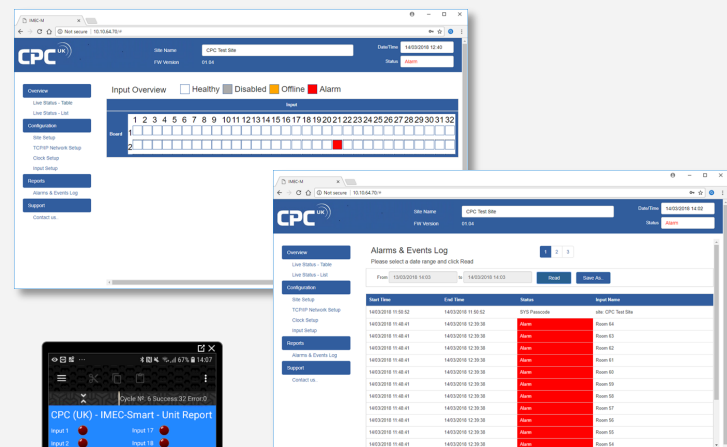


Installation and operation

Easy to configure and view

Using the Ethernet interface or local keypad and display, the IMEC-M is easily configured. Web pages and display screens allow access to set-up each digital input, alarm details and general unit settings.

Live status of the inputs can also be viewed, along with historical alarm and event information.



Android smart phone application

Using the CPC Android application the input status can be verified using a mobile phone locally at each IMEC-Smart panel to simplify the system commissioning.

Quick and easy wiring

Well spaced screw terminals provide connections for alarm signals and remote gas detector power.

All terminals are clearly marked, and are in logical order to simplify installation wiring.



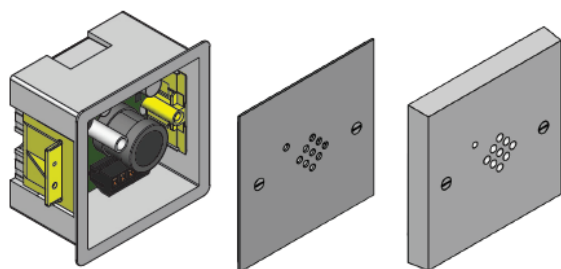
Accessories

RD-em gas leak detectors

The IMEC-M is used to monitor up to 256 RD-em refrigerant gas leak detectors, available from CPC (UK).

RD-em leak detectors provide a discreet stylish product, ideally suited for hotel rooms, offices and residential properties and are available in a number of variants, with different styles of fascia plates to suite your requirements.

The RD-em sits inside a flush mount electrical back box with a range of cover plates to compliment the electrical switches and sockets fitted in the room. Each microprocessor controlled RD-em is provided fully configured ready to monitor the environment for refrigerant leaks before health and safety limits are exceeded.



Expandable system

IMEC-Smart panels

IMEC-Smart panels are available in 32 or 64 input channel versions, with any combination of panels possible to provide up to 256 input channels.

Each IMEC-Smart panel provides a local alarm relay, which can be connected to secondary control and monitoring systems or devices. There is also an option for a local alarm with visual and/or audible outputs together with a mute facility. (contact CPC for more information)

